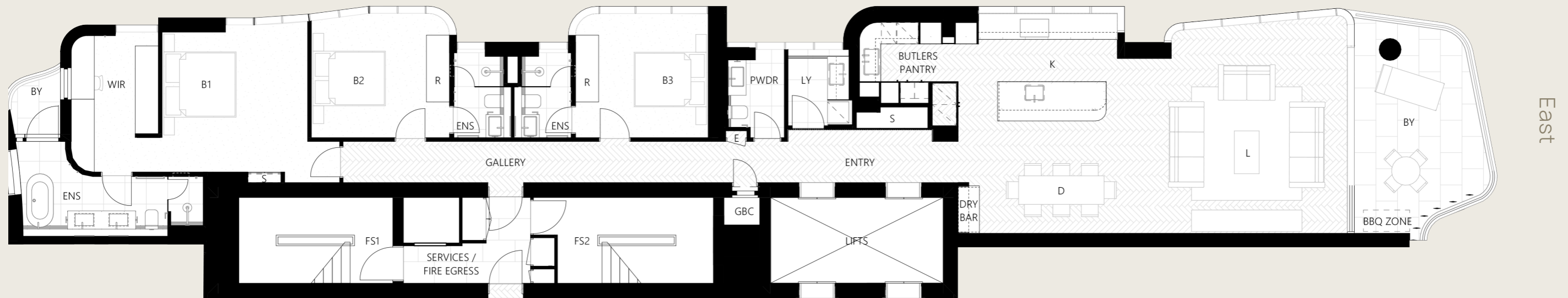


# HALF FLOOR NORTH

Level 2 - 12



3 BEDROOM  
3.5 BATHROOM  
2 CAR

NORTH EAST ASPECT

TOTAL 217m<sup>2</sup>

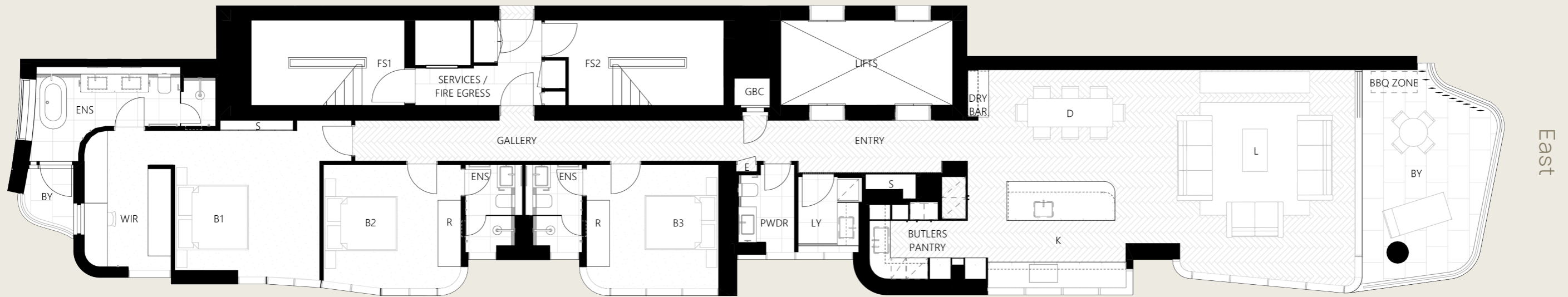
Internal 193m<sup>2</sup>  
External 24m<sup>2</sup>

\* Floor plans were prepared prior to construction of the Development and are indicative only. All matters in those floor plans are subject to variations made in accordance with the contract terms. Design changes, approval and survey may cause variations. Areas shown are the forecast total titled area rounded to nearest whole number, as calculated by the Vendor's surveyor, in accordance with the Community Management Statement. This document is not intended to be relied upon by anyone and does not form part of any contract of sale. Refer to contract of sale for specific details and inclusions. Furniture is not included.

ARC RESIDENCES  
— NORTHCLIFFE —

# HALF FLOOR SOUTH

Level 2 - 12



- 3 BEDROOM
- 3.5 BATHROOM
- 2 CAR

SOUTH EAST ASPECT

TOTAL 217m<sup>2</sup>

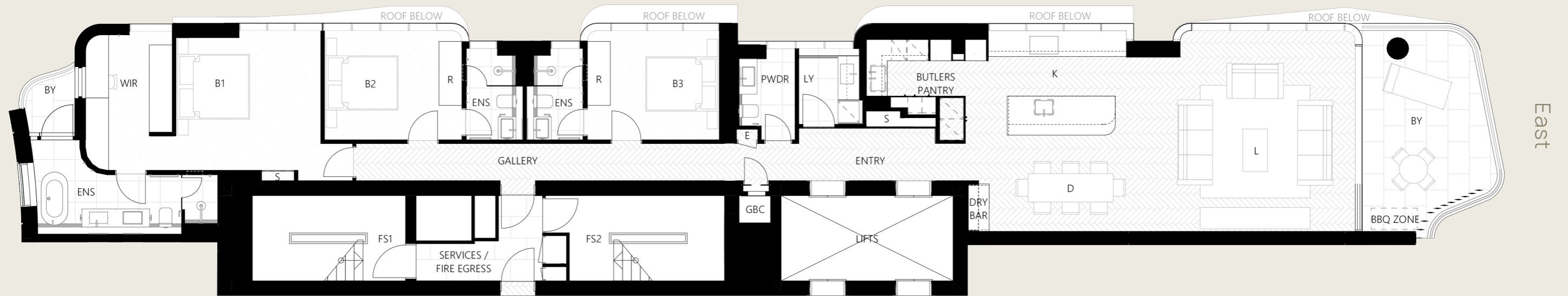
Internal 193m<sup>2</sup>  
External 24m<sup>2</sup>

\* Floor plans were prepared prior to construction of the Development and are indicative only. All matters in those floor plans are subject to variations made in accordance with the contract terms. Design changes, approval and survey may cause variations. Areas shown are the forecast total titled area rounded to nearest whole number, as calculated by the Vendor's surveyor, in accordance with the Community Management Statement. This document is not intended to be relied upon by anyone and does not form part of any contract of sale. Refer to contract of sale for specific details and inclusions. Furniture is not included.

ARC RESIDENCES  
— NORTHCLIFFE —

# HALF FLOOR NORTH

Level 13 - 16



- 3 BEDROOM
- 3.5 BATHROOM
- 2 CAR

NORTH EAST ASPECT

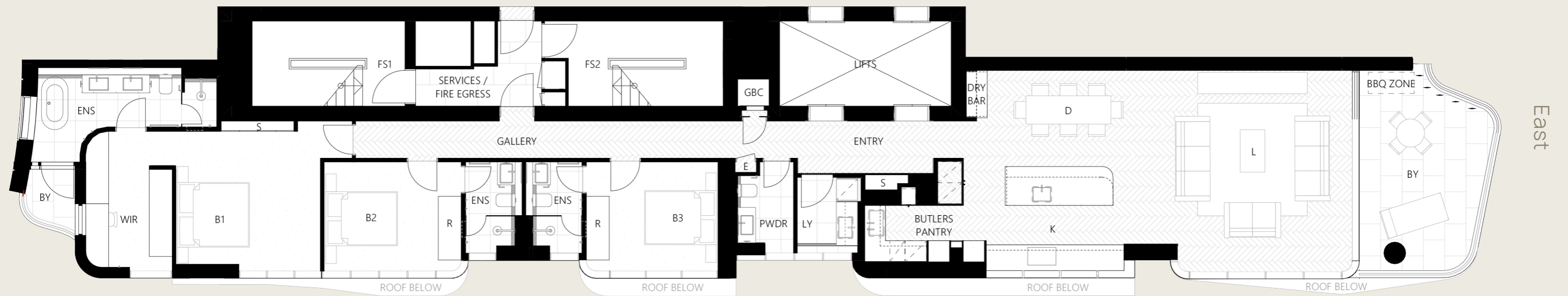
TOTAL 207m<sup>2</sup>

Internal 184m<sup>2</sup>  
External 23m<sup>2</sup>

\* Floor plans were prepared prior to construction of the Development and are indicative only. All matters in those floor plans are subject to variations made in accordance with the contract terms. Design changes, approval and survey may cause variations. Areas shown are the forecast total titled area rounded to nearest whole number, as calculated by the Vendor's surveyor, in accordance with the Community Management Statement. This document is not intended to be relied upon by anyone and does not form part of any contract of sale. Refer to contract of sale for specific details and inclusions. Furniture is not included.

# HALF FLOOR SOUTH

Level 13 - 16



- 3 BEDROOM
- 3.5 BATHROOM
- 2 CAR

SOUTH EAST ASPECT

TOTAL 207m<sup>2</sup>

Internal 184m<sup>2</sup>  
External 23m<sup>2</sup>

\* Floor plans were prepared prior to construction of the Development and are indicative only. All matters in those floor plans are subject to variations made in accordance with the contract terms. Design changes, approval and survey may cause variations. Areas shown are the forecast total titled area rounded to nearest whole number, as calculated by the Vendor's surveyor, in accordance with the Community Management Statement. This document is not intended to be relied upon by anyone and does not form part of any contract of sale. Refer to contract of sale for specific details and inclusions. Furniture is not included.

ARC RESIDENCES  
— NORTHCLIFFE —

# FULL FLOOR

Level 17 - 22



- 3 BEDROOM
- 3.5 BATHROOM
- 2 CAR

DIRECT OCEAN FRONT

TOTAL 416m<sup>2</sup>

Internal 368m<sup>2</sup>  
External 48m<sup>2</sup>

\* Floor plans were prepared prior to construction of the Development and are indicative only. All matters in those floor plans are subject to variations made in accordance with the contract terms. Design changes, approval and survey may cause variations. Areas shown are the forecast total titled area rounded to nearest whole number, as calculated by the Vendor's surveyor, in accordance with the Community Management Statement. This document is not intended to be relied upon by anyone and does not form part of any contract of sale. Refer to contract of sale for specific details and inclusions. Furniture is not included.

ARC RESIDENCES  
— NORTHCLIFFE —

# FULL FLOOR

Level 17 - 22



- 4 BEDROOM
- 4.5 BATHROOM
- 2 CAR

DIRECT OCEAN FRONT

TOTAL 416m<sup>2</sup>

Internal 368m<sup>2</sup>  
External 48m<sup>2</sup>

\* Floor plans were prepared prior to construction of the Development and are indicative only. All matters in those floor plans are subject to variations made in accordance with the contract terms. Design changes, approval and survey may cause variations. Areas shown are the forecast total titled area rounded to nearest whole number, as calculated by the Vendor's surveyor, in accordance with the Community Management Statement. This document is not intended to be relied upon by anyone and does not form part of any contract of sale. Refer to contract of sale for specific details and inclusions. Furniture is not included.